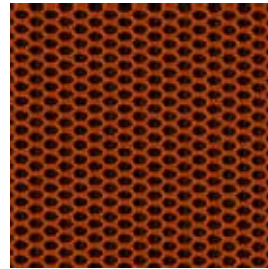
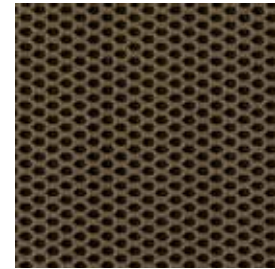


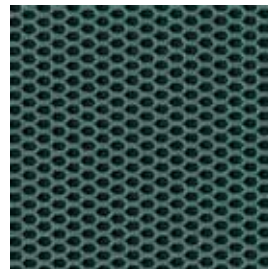
Omega : B



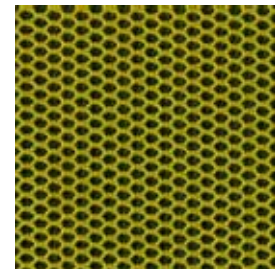
5445 (Dauphin)
54.45 (Züco)



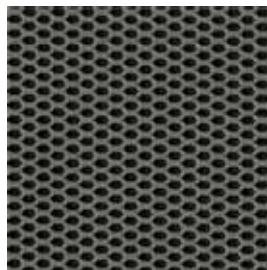
5452 (Dauphin)
54.52 (Züco)



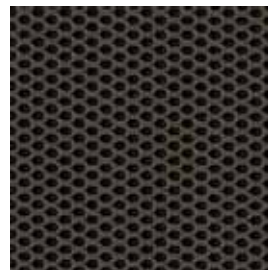
5414 (Dauphin)
54.14 (Züco)



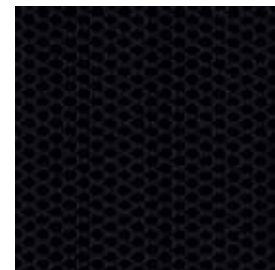
5411 (Dauphin)
54.11 (Züco)



5430 (Dauphin)
54.30 (Züco)



5436 (Dauphin)
54.36 (Züco)



5433 (Dauphin)
54.33 (Züco)

Omega : B

| | | |
|---|--|---------|
| Zusammensetzung / Composition | Polyester / polyester | 100% |
| Gewicht / Weight | ca. g/m / approx. g/m | 500 |
| Breite / Width | cm | 160 |
| Lichtechtheit / Light fastness | Note / value (ISO 105-B02) | 5 – 7 |
| Pilling / Pilling | Note / value (EN ISO 12945) | 5 |
| Reibechtheit / Fastness to rubbing | Note / value (EN ISO 105-X12) | |
| | nass / wet | 4 – 5 |
| | trocken / dry | 4 – 5 |
| Scheuerfestigkeit / Abrasion resistance | Touren / rubs (Martindale; DIN EN ISO 12947-2) | 100.000 |
| Brandverhalten / Flammability | DIN EN 1021: Teil 1/Part 1 / Teil 2/Part 2 | |
| Composition / Samenstelling | Polyester / polyester | 100% |
| Poids / Gewicht | env. g/m / ca. g/m | 500 |
| Largeur / Breedte | cm | 160 |
| Résistance à la lumière / Lichtechtheid | Note / graad (ISO 105-B02) | 5 – 7 |
| Boulochage / Pilling | Note / graad (EN ISO 12945) | 5 |
| Solidité au frottement / Wrijfechtheid | Note / graad (EN ISO 105-X12) | |
| | humide / nat | 4 – 5 |
| | sec / droog | 4 – 5 |
| Résistance à l'abrasion / Slijtvastheid | frottements / schuurtoeren (Martindale; DIN EN ISO 12947-2) | 100.000 |
| Classement au feu / Brandveiligheid | DIN EN 1021: partie 1/deel 1 / partie 2/deel 2 | |
| Composizione / Composición | Poliestere / poliéster | 100% |
| Peso / Peso | ca. g/m / aprox. g/m | 500 |
| Altezza / Ancho | cm | 160 |
| Solidità alla luce / Resistencia a la luz | Valutazione / Nota (ISO 105-B02) | 5 – 7 |
| Pilling / Desgaste del tapizado | Valutazione / Nota (EN ISO 12945) | 5 |
| Solidità alla sfregamento / Resistencia a la fricción | Valutazione / Nota (EN ISO 105-X12) | |
| | umido / húmedo | 4 – 5 |
| | asciutto / seco | 4 – 5 |
| Resistenza all'abrasione / Resistencia a la abrasión | cicli / ciclos (Martindale; DIN EN ISO 12947-2) | 100.000 |
| Reazioni al fuoco / Comportamiento frente al fuego | DIN EN 1021: parte 1/1 / parte 2/2 | |

Farbabweichungen, Irrtum sowie Änderungen vorbehalten./Differences in colour, errors and modifications excepted.

Sous réserve de variations de couleurs, d'erreurs et de modifications./Kleurafwijkingen, fouten en wijzigingen voorbehouden.

Non si risponde di differenze di colore, errori e modifiche./No se asume responsabilidad alguna sobre divergencias del color, errores ni modificaciones.